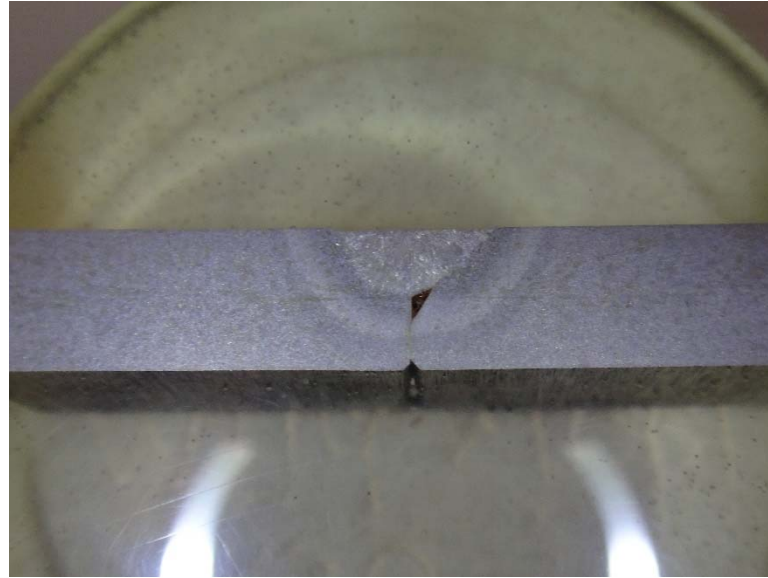
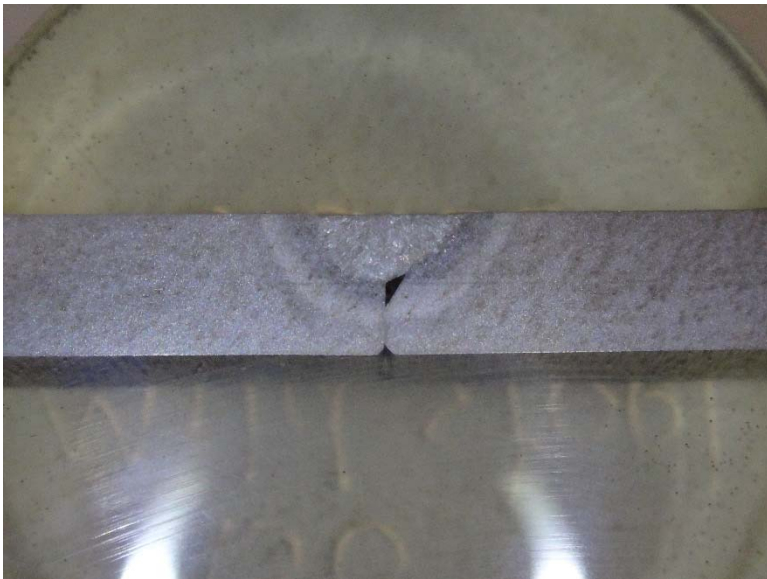




**Figure 1:** Welded A36 mild steel immersed in a freshly mixed ammonium persulfate solution for 1 minute. The sample surface was mirror polished.



**Figure 2:** Welded A36 mild steel immersed in a 3-month old ammonium persulfate solution for 1 minute. The sample surface was re-polished before etching.



**Figure 3:** Welded A36 mild steel immersed in a 6-month old ammonium persulfate solution for 1 minute. The sample surface was re-polished before etching.