

Test Results of AWS D1.2 Basic Etchant

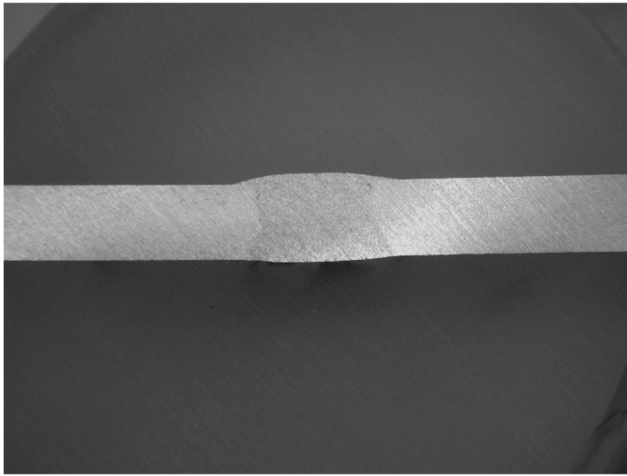


Figure 1: 6063-T52 aluminum plate welded with ER4043 rod. Ground to 600 grit finish then etched with AWS D1.2 Basic Etchant.

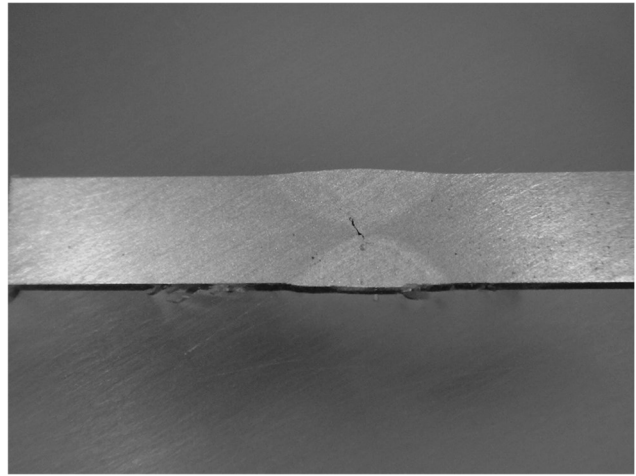


Figure 2: 6061-T6511 aluminum plate welded with ER4043 rod. Ground to 600 grit finish then etched with AWS D1.2 Basic Etchant.

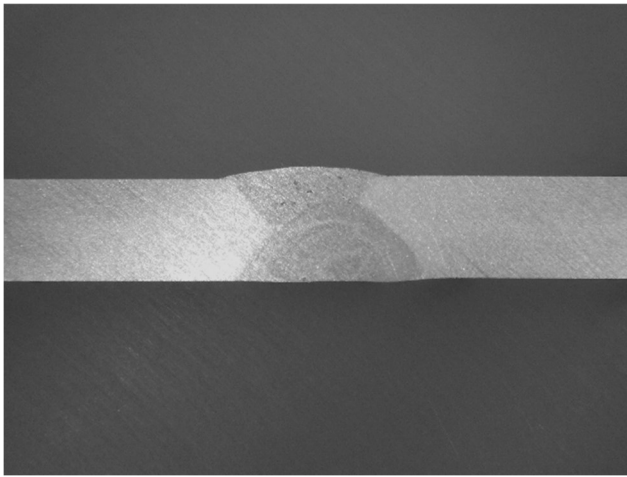


Figure 3: 5052-H32 aluminum plate welded with ER4043 rod. Ground to 600 grit finish then etched with AWS D1.2 Basic Etchant.

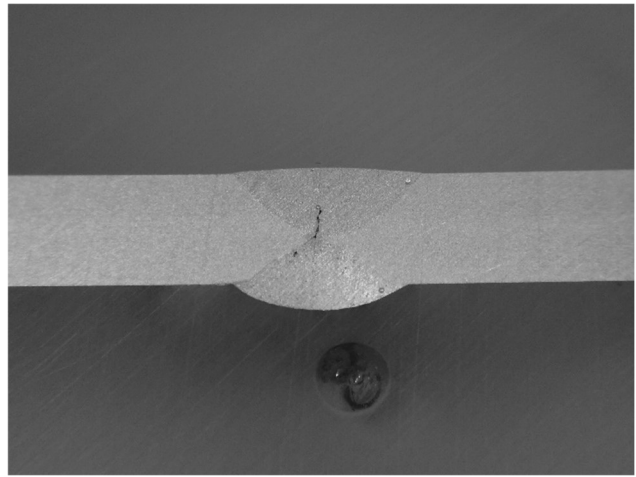


Figure 4: 3003-H14 aluminum plate welded with ER4043 rod. Ground to 600 grit finish then etched with AWS D1.2 Basic Etchant.

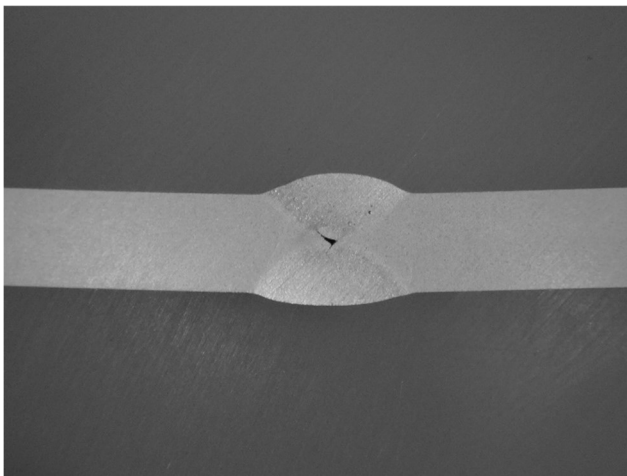


Figure 5: 5083-H116 aluminum plate welded with ER5356 rod. Ground to 600 grit finish then etched with AWS D1.2 Basic Etchant.

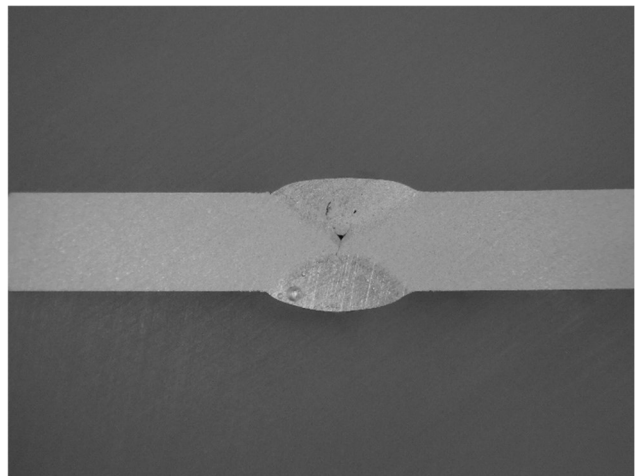


Figure 6: 5456-H116 aluminum plate welded with ER5356 rod. Ground to 600 grit finish then etched with AWS D1.2 Basic Etchant.